



Fisheries and Oceans
Canada

Pêches et Océans
Canada

Canadian
Coast Guard

Garde côtière
canadienne

Notices to Mariners

Edition No. 06/2025
June 27, 2025



Safety First, Service Always

Monthly Eastern Edition

Canada 

Notices to Mariners – Monthly Eastern Edition
Edition No. 06/2025

Aussi disponible en français :
Avis aux navigateurs – Édition mensuelle de l'Est
Édition n° 06/2025

Published under the Authority of:

Canadian Coast Guard Programs
Aids to Navigation and Waterways
Fisheries and Oceans Canada
Montreal, QC H2Y 2E7

For more information, contact DFO.Notmar-Notmar.MPO@dfo-mpo.gc.ca.

© His Majesty the King in Right of Canada,
as represented by the Minister of Fisheries, Oceans
and the Canadian Coast Guard, 2025.

Cat. No. Fs152-8E-PDF (Electronic PDF, English)
ISSN 2817-0075

Cat. No. Fs152-8F-PDF (Electronic PDF, French)
ISSN 2817-0083

A web version is available here:

[Notices to Mariners – Monthly Editions](#) (English)

[Avis aux navigateurs – Publications mensuelles](#) (French)

Explanatory Notes – Notices to Mariners (NOTMAR)

Geographical positions refer directly to the graduations of the largest scale Canadian Hydrographic Service chart (unless otherwise indicated).

Bearings refer to the true compass and are measured clockwise from 000° (North) clockwise to 359°; those relating to lights are from seaward.

Visibility of lights is that in clear weather.

Depths - The units used for soundings (metres, fathoms or feet) are stated in the title of each chart.

Elevations are normally given above Higher High Water, Large Tide (unless otherwise indicated).

Distances may be calculated as follows:

- 1 nautical mile = 1,852 metres (6,076.1 feet)
- 1 statute mile = 1,609.3 metres (5,280 feet)
- 1 metre = 3.28 feet

Temporary and Preliminary Notices to Mariners – Section 1A of *Notices to Mariners*

These notices are indicated by a (T) or a (P), respectively. Please note that nautical charts are not amended by the Canadian Hydrographic Service for temporary (T) and preliminary (P) notices. It is recommended that mariners chart these corrections in pencil. For the list of charts affected by (T) & (P) notices, please refer to the current [Notices to Mariners - Monthly Summary of Temporary and Preliminary Notices](#) publication.

Suggestions and Corrections Form

This form is specifically for suggestions and corrections to Notices to Mariners publications. It is available [online](#) and also in [fillable PDF format](#) included with the monthly publication ZIP file.

To submit comments and suggestions on possible improvements to the various publications and services: DFO.Notmar-Notmar.MPO@dfo-mpo.gc.ca.

To report chart discrepancies and/or corrections to the *Canadian Sailing Directions* booklets: Fill out the [Marine Information Reporting Form](#) and/or email chsinfo@dfo-mpo.gc.ca.

To report emergencies or navigational hazards: [Contact your nearest MCTS centre](#)

- VHF channel 16 (156.8 MHz)
- MF/HF frequency 2182 kHz/4125 kHz (where available)
- *16 on a cellphone (where available)

NOTMAR Website – Monthly Editions, Chart Corrections and Chart Patches

The NOTMAR website allows users to access the [monthly publications](#), [chart corrections](#), and [chart patches](#).

Users can subscribe for free to the [email notification service](#) to receive notifications when charts of interest are updated, including their patches, as well as when a new Monthly Edition of *Notices to Mariners* is published.

In addition, the monthly publication and related files to download, such as chart patches, can be obtained all together through the download of a single ZIP file.

Explanatory Notes – Canadian Hydrographic Service (CHS)

Chart Corrections – Section 2 of *Notices to Mariners*

Corrections to nautical charts will be listed in numerical order by chart number. Each chart correction listed applies only to that particular chart. Related charts, if any, will have their own specific correction listed separately.

Users should also refer to CHS *Chart 1: Symbols, Abbreviations and Terms* for additional information pertaining to the correction of charts.

The illustration below describes the elements that will comprise a typical Section 2 chart correction:

	Chart Number	Chart Title	Chart latest new edition date	Horizontal Chart Datum	Last Correction
Weekly Chart Correction Date	1312	Lac Saint-Pierre - New Edition - 10-MAY-2019 - NAD 1983			
	05-AUG-2022				LN/D. 24-SEP-2021
	Amend				46°03'32.4"N 073°03'21.6"W
		(See Chart 1 P16)		(Q2022035) LL(2177)	DFO(6410690-01)
	Chart Action	Chart 1 Reference No.	CCG Reference No.	List of Lights No.	CHS Reference No.

The last correction number is identified with the **LN/D** or **Last Notice to Mariners Number / Date**.

Mariners are advised that only the most critical changes that directly affect safety to navigation are issued in "Section 2 – Chart Corrections." This limitation is required to ensure that charts remain as clear and easy to read as possible. As a result, mariners may see minor discrepancies of a non-critical nature between information in official publications. For example, a small change in the nominal range or focal height of a light may not result in the production of a chart correction in *Notices to Mariners*, but may result in a correction in the [List of Lights, Buoys and Fog Signals](#) publication.

Note: In the case of a discrepancy between information provided on CHS charts relating to aids to navigation, and the *List of Lights, Buoys and Fog Signals* publication, the latter shall be deemed as containing the most up-to-date information.

Explanatory Notes – Marine Communications and Traffic Services (MCTS)

Navigational Warnings / Notices to Shipping

The Canadian Coast Guard (CCG) is implementing a number of changes to the aids to navigation system in Canada.

These changes are advertised as Navigational Warnings, formerly called Notices to Shipping¹, that are broadcast by the CCG, and are then followed up with Notices to Mariners, then charts are updated by hand correction, reprints or new editions.

Mariners are advised that all relevant Navigational Warnings (NAVWARN) should be kept until superseded by Notices to Mariners or through revised charts issued by the Canadian Hydrographic Service (CHS).

NAVWARN are accessible on the applicable regional page on the [CCG Navigational Warnings](#).

CHS is reviewing the impact of these changes with CCG and together are preparing an action plan on the issuing of chart revisions.

For further information, contact your regional NAVWARN Issuing Desk.

Atlantic Region (North) *Port aux Basques MCTS Centre “N” Series NAVWARN Canadian Coast Guard 49 Stadium Rd. P.O. Box 99 Port aux Basques, NL A0M 1C0 Telephone: 709-695-2168 or 1-800-563-9089 Facsimile: 709-695-7784 Email: NAVWARN.MCTSPortAuxBasques@innav.gc.ca	Central Region *Prescott MCTS Centre “Q” and “C” Series NAVWARN Canadian Coast Guard 401 King Street West P.O. Box 1000 Prescott, ON K0E 1T0 Telephone: 613-925-0666 Facsimile: 613-925-4519 Email: NAVWARN.MCTSPrescott@innav.gc.ca
Atlantic Region (South) *Sydney MCTS Centre “M” Series NAVWARN Canadian Coast Guard 1190 Westmount Road Sydney, NS B1R 2J6 Telephone: 902-564-7751 or 1-800-686-8676 Facsimile: 902-564-7662 Email: NAVWARN.MCTSSydney@innav.gc.ca	Arctic Region *Iqaluit MCTS Centre <i>Operational from approximately mid-May until late December.</i> “A” Series NAVWARN Canadian Coast Guard P.O. Box 189 Iqaluit, NU X0A 0H0 Telephone: 867-979-5269 Facsimile: 867-979-4264 Email: NAVWARN.MCTSIqaluit@innav.gc.ca

*Service available in English and in French.

¹ The expression “Notice to Shipping” was changed to “Navigational Warning” in January 2019.

Table of Contents

Section 1: General and Safety Information	1
*505/23 Canadian Hydrographic Service – Magnetic Declination Calculations	1
*1207/23 Canadian Hydrographic Service – Inappropriate Geographical Names Review Process	1
*304/25 Canadian Coast Guard – Great Lakes Waterway Information	1
*405/25 Saguenay–St. Lawrence Marine Park - Beluga Whale Protection: Slowdown Area at the Mouth of the Saguenay Fjord and Area Closure at Baie Sainte-Marguerite	2
*406/25 Saguenay–St. Lawrence Marine Park and Surrounding Waters – Whale Protection	5
*519(P)/25 Scott Islands – Paper Chart to be Discontinued	6
*601/25 Protecting the North Atlantic Right Whale: Speed Restriction Measures in the Gulf of St. Lawrence	6
*602/25 Canadian Hydrographic Service – Nautical Charts	15
*603/25 Canadian Hydrographic Service – Electronic Navigational Charts	15
*604/25 Canadian Hydrographic Service – Raster Digital Charts (BSB V3)	16
*605/25 Transport Canada - Ship Safety Bulletins #08 and #09/2025	17
Section 1A: Temporary and Preliminary Notices	18
Reminder – Comment Period for Active Preliminary Notices	18
*606(P)/25 Hawkes Bay, Port Saunders, Back Arm – Aid to Navigation to be Discontinued	19
*607/25 Plans, Baie des Chaleurs/Chaleur Bay (côte nord/North Shore) – Aquaculture Sites Charted	19
*608(T)/25 Cobourg to/à Oshawa – Waterway Information: Shoal	19
*609(T)/25 Toronto Harbour – Marine Works: Underwater Construction	19
*610(T)/25 Georgian Bay / Baie Georgienne – Aids to Navigation Temporarily Established	20
*611/25 Lake Rosseau and/et Lake Joseph – Unlit Buoy Permanently Established	20
Section 2: Chart Corrections	21
Section 3: Radio Aids to Marine Navigation Corrections	29
*612/25 Radio Aids to Marine Navigation 2025 (Atlantic, St. Lawrence, Great Lakes, Lake Winnipeg, Arctic and Pacific)	29
Section 4: Canadian Sailing Directions Corrections	30
Section 5: List of Lights, Buoys and Fog Signals Corrections	31

Numerical Index of Canadian Charts Affected

This numerical index lists all nautical charts mentioned in this monthly edition of Notices to Mariners. Only charts appearing in Section 2 of this publication require a chart correction. The appearance of charts in all other sections, particularly those related to the correction of other nautical publications, is included here for reference.

Chart No.	Pages	Chart No.	Pages	Chart No.	Pages
1223	33	4730	25		
1234	18	4826	25		
1313	21	4827	26		
1315	21, 22	4839	26		
1430	18, 34	4864	26		
2017	34	4905	31		
2050	22	4909	31		
2058	19	4913	26, 33		
2059	34	4920	27, 31, 32, 33		
2085	19	4921	19		
2123	22	5510	18		
2201	20	6022	20		
2261	20	6241	34		
2291	20	6267	34		
3001	15	7010	27		
3011	15	7193	27		
3625	18	7194	27, 28		
4001	22	8047	28		
4010	22	14853 (U.S.)	1		
4025	33	14882 (U.S.)	1		
4115	23	14883 (U.S.)	1		
4116	31	14884 (U.S.)	1		
4117	23, 24				
4243	24				
4245	24				
4278	25				
4337	25				
4374	18				
4381	25				
4430	33				
4464	18				
4585	31				
4653	25				
4679	19				

Section 1: General and Safety Information

***505/23 Canadian Hydrographic Service – Magnetic Declination Calculations**

(Recurrent publication of notice *505/23, originally published in the *Notices to Mariners – Monthly Eastern Edition* 05/2023 publication.)

Mariners are advised that CHS has adopted the harmonized World Magnetic Model (WMM), as found on the NCEI/NOAA website. Old compass rose declination information on CHS navigational products can be updated using this website: <https://www.ngdc.noaa.gov/geomag/calculators/magcalc.shtml#declination>. While the differences in the model declinations are small each year, they can become more significant over a large period of time.

***1207/23 Canadian Hydrographic Service – Inappropriate Geographical Names Review Process**

(Recurrent publication of notice *1207/23, originally published in the *Notices to Mariners – Monthly Eastern Edition* 12/2023 publication.)

The records of the Canadian Hydrographic Service could contain geographical names that may be considered inappropriate, offensive and derogatory. Geographical naming authorities are in the process of addressing many offensive place names, the review process is underway. For more information, about inappropriate geographical names, please see the [following announcement](#).

***304/25 Canadian Coast Guard – Great Lakes Waterway Information**

(Recurrent publication of notice *304/25, originally published in the *Notices to Mariners – Monthly Eastern Edition* 03/2025 publication.)

Reference chart: 14853 (U.S.), 14882 (U.S.), 14883 (U.S.), 14884 (U.S.)

Updated shoaling conditions for the navigational channels in the Great Lakes are available on the Canadian Coast Guard websites:

[CCG e-Nav - Shoals in the Detroit River](#)

[CCG e-Nav - Shoals in the St. Clair River](#)

[CCG e-Nav - Shoals in the St. Mary's River](#)

Great Lakes Waterways Channel Bottom Conditions and Active Shoals are available at the website:

[GCC - e-Nav Portal - Central - Great Lakes Waterways - Channel Bottom Conditions](#)

Areas		
Detroit River	North Channel	St. Clair River
Great Lakes	Lake Huron	St. Marys River
Lake Erie	Lake St. Clair	Whitefish Bay

***405/25 Saguenay–St. Lawrence Marine Park - Beluga Whale Protection: Slowdown Area at the Mouth of the Saguenay Fjord and Area Closure at Baie Sainte-Marguerite**

(Recurrent publication of notice *405/25, originally published in the *Notices to Mariners – Monthly Eastern Edition* 04/2025 publication.)

The Saguenay–St. Lawrence Marine Park and its surrounding area are at the heart of endangered beluga whale critical summer habitat. Marine mammal protection measures have been put in place in accordance with the *Marine Activities in the Saguenay–St. Lawrence Marine Park Regulations* within the limits of the Marine Park.

However, important feeding, calving and rearing areas for beluga whales require greater protection to ensure the recovery of the species. The portion of the Saguenay situated between the mouth of the Fjord and Baie Sainte-Marguerite is one of the areas most used by females and their young from May to October. The mouth of the Saguenay is known as a feeding ground and Baie Sainte-Marguerite as a calving and rearing area.

In order to prevent collisions with beluga whales, a compulsory 15-knot slowdown area is in effect from May 1st to October 31st at the mouth of the Saguenay. To ensure tranquility for female belugas and their young during the critical calving period, access to Baie Sainte-Marguerite is prohibited to all vessels from June 21st to September 21st, except for special authorizations (see description below).

For safety reasons, the slowdown area measure at the mouth of the Saguenay Fjord does not apply to cargo ships (see the monthly edition of Notice to Mariners from May to October for voluntary protection measures in the St. Lawrence Estuary). An enhanced vigilance is, however, recommended to all navigators between the mouth of the Saguenay Fjord and Baie Sainte-Marguerite for the protection of beluga whales.

For more information on the Saguenay–St. Lawrence Marine Park, see notice 5C of the *Notices to Mariners Annual Edition 2025* or visit the [Saguenay-St. Lawrence Marine Park website](#).

REGULATORY PROTECTION MEASURES — BELUGA WHALE

Entire Marine Park Territory:

- When beluga whales are less than half a nautical mile (926 metres) from a motorized vessel, the vessel must maintain a steady speed of between 5 and 10 knots.
- All vessels, including human-powered vessels (kayaks and canoes), must continue to move forward and maintain their heading.
- All vessels must maintain a minimum distance of 400 metres from beluga whales at all times.

For more information concerning the regulations, consult the [“Navigate” section of the Saguenay-St. Lawrence Marine Park website](#).

Mouth of the Saguenay Fjord (Figure 1) — Slowdown Area (area crosshatched in red):

- Maximum speed at the mouth of the Saguenay between buoys S7 and S8 and the ferry docks between Baie-Sainte-Catherine and Tadoussac is 15 knots from May 1st to October 31st.

Baie Sainte-Marguerite (Figure 2) — Area Closure (red area):

- From June 21st to September 21st, vessels must not enter the red area, which follows a line between Cap Nord-Ouest and Cap Sainte-Marguerite.
- Special authorizations are granted only for kayaks, canoes and recreational fishermen who must travel without stopping along a corridor within 10 metres of the shore or in shallow areas.

VOLUNTARY PROTECTION MEASURES

Baie Sainte-Marguerite sector (Figure 2) — Transit Area (area crosshatched in yellow):

- From June 21st to September 21st, navigation in this area is recommended at a speed of between 5 and 10 knots without stopping.

The purpose of this transit area is to favour respect of the *Marine Activities in the Saguenay–St. Lawrence Marine Park Regulations*, since beluga whales are often present in the Baie Sainte-Marguerite sector.

Information

All incidents, including collisions with whales, must be reported without delay by calling 1-866-508-9888. For any other situation concerning a marine mammal that is either dead or in trouble, contact the Marine Mammal Emergency Response Network at 1-877-722-5346, or use VHF channel 16.

Figure 1

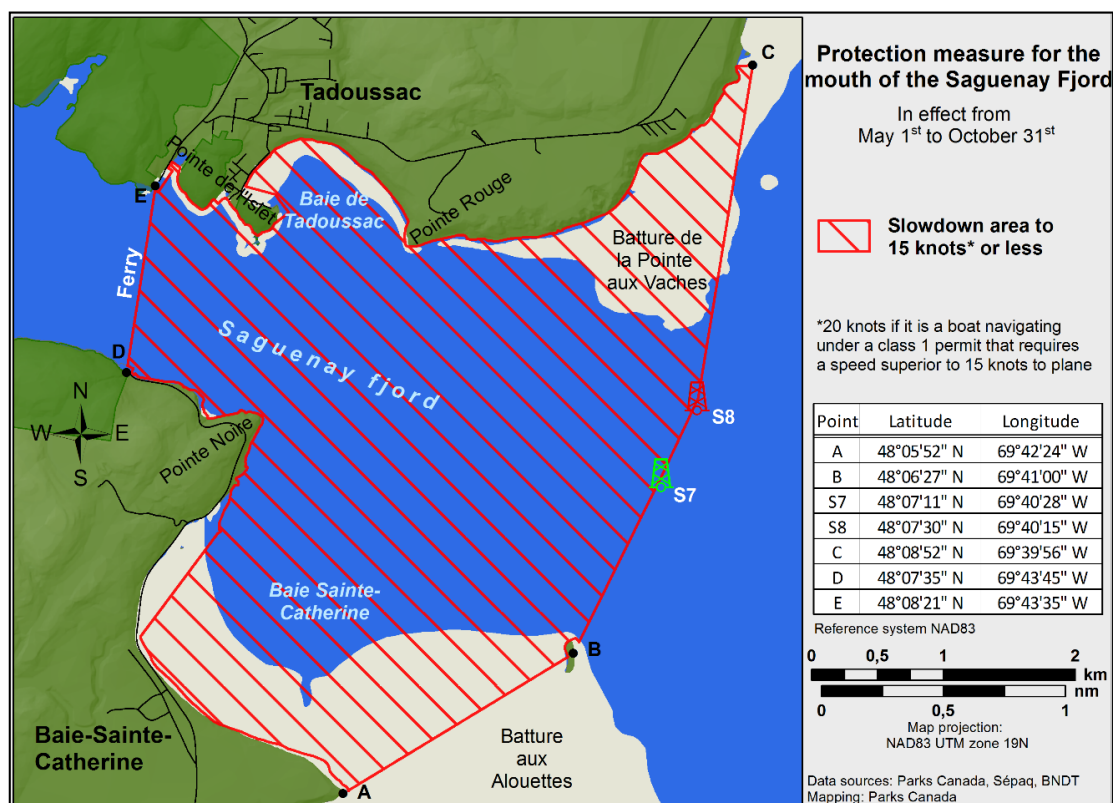
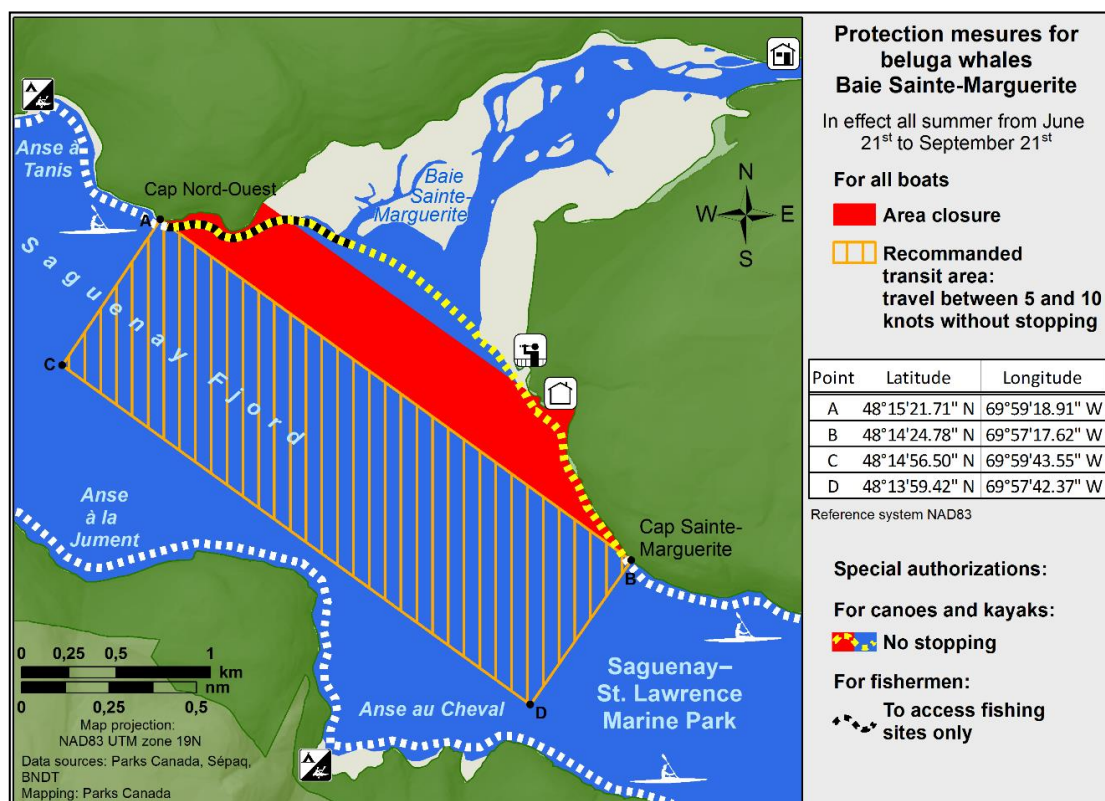


Figure 2



***406/25 Saguenay–St. Lawrence Marine Park and Surrounding Waters – Whale Protection**

(Recurrent publication of notice *406/25, originally published in the *Notices to Mariners – Monthly Eastern Edition* 04/2025 publication.)

The waters in and around the Saguenay–St. Lawrence Marine Park are well known for the resident endangered beluga population and the wide diversity of whales that migrate there to feed, particularly between April and November.

REGULATORY PROTECTION MEASURES

All whale species that are found in the St. Lawrence are protected under the *Marine Mammal Regulations*, pursuant to the *Fisheries Act*. Within the boundaries of the Marine Park, specific measures are set out in the *Marine Activities in the Saguenay–St. Lawrence Marine Park Regulations*, pursuant to the establishment of the *Saguenay–St. Lawrence Marine Park Act*. Any collision with a marine mammal within the Marine Park must immediately be reported to a park warden at 1-866-508-9888. For collisions that occur outside the Marine Park or for any situation involving a marine mammal that is dead or in trouble, contact the emergency network at 1-877-722-5346 or on VHF channel 16.

For more information on the Saguenay–St. Lawrence Marine Park, see notice 5C of the *Notices to Mariners Annual Edition 2025*.

VOLUNTARY PROTECTION MEASURES

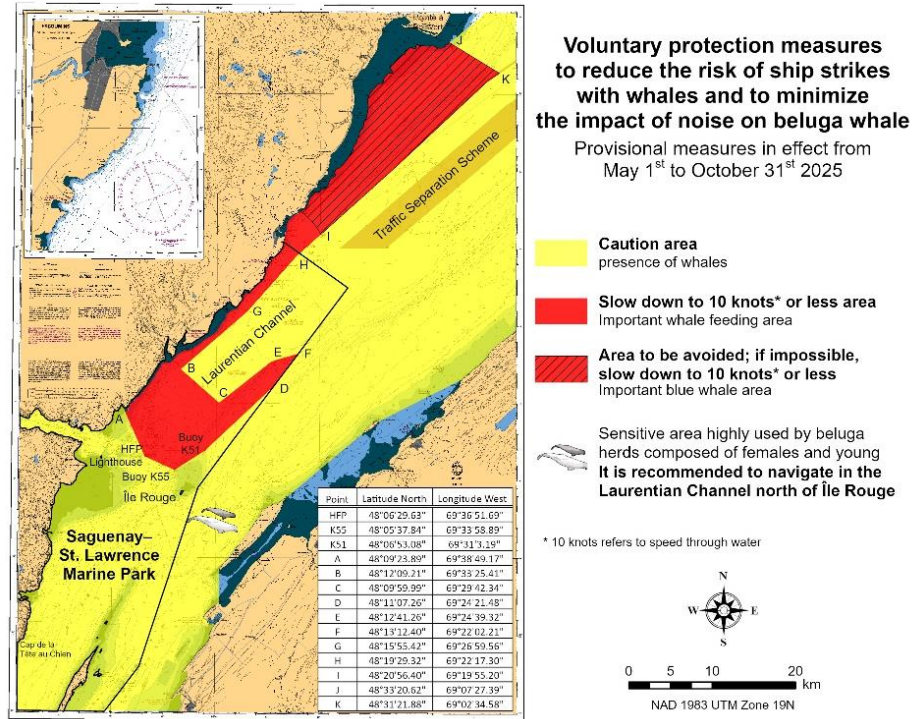
Provisional measures in effect from May 1 to October 31, 2025. See map at the end of this notice.

These measures apply to merchant vessels and cruise ships between Pointe à Boisvert and Cap de la Tête au Chien to prevent collisions with whales. These measures should only be taken when they will not jeopardize navigational safety.

Caution area (yellow area): To reduce the risk of collisions with whales that can be present anywhere in this area, heightened vigilance of navigators is critical. Posting a lookout is recommended in order to increase the chances of seeing the whales and thus taking necessary measures to avoid them. If bypassing the whales is not possible, slow down and wait for the animals to move away to a distance greater than 400 metres (0.215 nautical miles) before resuming original speed. It is more difficult to see the animals at night therefore increased caution is recommended.

Slow down to 10 knots or less area (red area): To reduce the risk of collisions with whales in this feeding area, it is recommended that vessels slow down to a maximum speed through the water of 10 knots and post a lookout. It is further recommended to remain in the Laurentian Channel to the north of Île Rouge to minimize the impact of noise in a sensitive area south of this island, which is highly frequented by herds of beluga whales composed of females and young.

Area to be avoided (hatched red area): To reduce noise and the risk of collisions with whales, vessels should avoid transiting through this area which is highly frequented by blue whales, an endangered species. If the area cannot be avoided, slow down to a speed through the water of 10 knots or less.



*519(P)/25 Scott Islands – Paper Chart to be Discontinued

(Recurrent publication of notice *501/25, originally published in the *Notices to Mariners – Monthly Eastern Edition* 05/2025 publication.)

Reference chart: 3625

The Canadian Hydrographic Service proposes to permanently discontinue paper chart 3625 called Scott Islands.

Mariners and other interested parties are invited to comment on this action until August 31, 2025.

Comments should be directed to the [Canadian Hydrographic Service email address](#).

Any objections raised must state the facts on which they are based and should include supporting information on safety, commerce and public benefit.

*601/25 Protecting the North Atlantic Right Whale: Speed Restriction Measures in the Gulf of St. Lawrence

Reference: Notice 501/25 is cancelled

Purpose

This notice describes the speed and navigational restriction zones that vessels must follow in the Gulf of St. Lawrence.

The Government of Canada has established these zones to reduce the risk of vessel colliding with North Atlantic right whales (NARW).

Background

Due to changing migration patterns of North Atlantic right whales and their increased presence in the Gulf of St. Lawrence, the Government of Canada has set seasonal speed restrictions in specific zones. These speed restriction zones are defined as “static zones”, “dynamic shipping zones”, “seasonal management areas”, a “voluntary seasonal slowdown zone” and a “restricted area”. [See the map below for details.](#)

Note: Vessels **must follow** Navigational Warnings outlining the speed restrictions. The *Interim Order No.3 for the Protection of North Atlantic Right Whales (Eubalaena Glacialis) in the Gulf of St. Lawrence, 2025* enables the issuance of Navigational Warnings (NAVWARNs) imposing speed restrictions and navigation restrictions.

Speed restriction zones are described in monthly Notices to Mariners (NOTMARs), which are published by the Canadian Coast Guard. The status of these zones is broadcasted through NAVWARNs, which are published by the Coast Guard's Marine Communications and Traffic Services Centres.

CHANGES TO SPEED RESTRICTION ZONES AND MEASURES

Based on consultations with industry and on scientific data, changes to the speed restriction zones are effective since April 16th, 2025, while the restricted area will be implemented based on whale presence.

A voluntary seasonal slowdown of 10.0 knots over the ground spanning from Cabot Strait (a line running from Cape North NS to Cape Ray NL) to the eastern edge of dynamic shipping zone E will be implemented at the beginning and end of the North Atlantic right whale season (Spring and fall).

Please check the latest NAVWARN for all speed restrictions currently in effect.

SPEED RESTRICTION MEASURES FOR 2025

These restrictions are in effect from **April 16 to November 15, 2025.**

Note: This is the third interim order for the 2025 North Atlantic Right Whale (NARW) season, which started on April 16th, during the 2025 federal election period. The first was signed for a 30-day period, to provide protection for the species, while meeting Caretaker Convention requirements. The second Interim Order extended the protective measures for 30 days to provide continuity while Cabinet is formed. The third interim order was signed to cover the remaining of the NARW season until November 15th, 2025.

Exceptions

The following exception will apply to **all** measures:

- a) a vessel in distress or providing assistance to a person or a vessel in distress;
- b) a government vessel being used:
 - i) for law enforcement activities;
 - ii) for search and rescue operations; or
 - iii) to ensure the competency of the crew or the operational readiness of the vessel or crew with respect to such activities or operations.

STATIC ZONES

In the static zones, **all** vessels above **13 m** in length overall (LOA) must proceed at a speed of not more than 10.0 knots over the ground.

Exclusions

Air cushion vessels operated by or on behalf of the Government of Canada that are engaged in ice-clearing activities from April to June in and around Chaleur Bay are exempted when in operation.

36.57 m (20-fathom) shallow water protocol exclusion

Vessels engaged in any commercial fishing activity may proceed at a safe operational speed in waters not more than 36.57 m (20 fathom) deep within the static zones.

If a notice to fish harvesters and a NAVWARN state that at least one North Atlantic right whale has been detected in waters within a static zone or its associated buffer zone that are not more than 36.57m deep, the speed limit of 10.0 knot over the ground will apply in the concerned zone(s) to all vessels above 13m in length overall (LOA). The speed restriction will be in effect for 15 days after the day on which the whale was detected. The buffer zones associated with the static zones are located 5 miles north and south of their adjacent border in waters less than 36.57m deep.

Coordinates for the northern static zone:

- 50° 20' N 065° 00' W
- 49° 13' N 065° 00' W
- 48° 40' N 064° 13' W
- 48° 40' N 062° 40' W
- 48° 03' N 061° 07.5' W
- 47° 58.1' N 061° 03.5' W
- 48° 00' N 061° 00' W
- 49° 04' N 061° 00' W
- 49° 04' N 062° 00' W
- 49° 43' N 063° 00' W
- 50° 20' N 063° 00' W

Coordinates for the southern static zone:

- 48° 40' N 065° 00' W
- 48° 40' N 062° 40' W
- 48° 03' N 061° 07.5' W
- 47° 58.1' N 061° 03.5' W
- 47° 10' N 062° 30' W
- 47° 10' N 065° 00' W

DYNAMIC SHIPPING ZONES

There are five dynamic shipping zones (DSZ) located in the routing systems north and south of Anticosti Island: A, B, C, D and E

Coordinates for the dynamic shipping zones:

Zone A

- 49° 41' N, 065° 00' W
- 49° 20' N, 065° 00' W
- 49° 11' N, 064° 00' W
- 49° 22' N, 064° 00' W

Zone B

- 49° 22' N, 064° 00' W
- 49° 11' N, 064° 00' W
- 48° 48' N, 063° 00' W
- 49° 00' N, 063° 00' W

Zone C

- 49° 00' N, 063° 00' W
- 48° 48' N, 063° 00' W
- 48° 24' N, 062° 00' W
- 48° 35' N, 062° 00' W

Zone D

- 50° 16' N, 064° 00' W
- 50° 00' N, 064° 00' W
- 49° 56' N, 063° 00' W
- 50° 16' N, 063° 00' W

Zone E

- 48° 35' N 062° 00' W
- 48° 24' N 062° 00' W
- 48° 03' N 061° 07.5' W
- 47° 58.1' N 061° 03.5' W
- 48° 00' N 061° 00' W
- 48° 10.5' N 061° 00' W

When a North Atlantic right whale is detected in a dynamic shipping zone or in the buffer zones, located 5 nautical miles south or 2.5 nautical miles from the eastern and western edges of the dynamic shipping zones:

- All vessels will be notified via a NAVWARN; and
- Vessels above **13 m** in length overall (LOA) must proceed at a speed of not more than 10.0 knots over the ground within that zone.

Even though dynamic shipping zones overlap with static zones, vessels can travel at a safe operational speed in dynamic shipping zones when they are not under speed restriction. Mariners must also keep in mind that North Atlantic right whales may be nearby.

SPEED RESTRICTIONS IN THE DYNAMIC SHIPPING ZONES

The detection of North Atlantic right whales in one or more dynamic shipping zone(s), or in their buffer zones, will trigger a speed restriction in the concerned zone(s). The speed restriction in the dynamic shipping zone(s) will be in effect for 15 days from the date of detection. In the event of a new North Atlantic right whale detection occurring in the last 7 days of the 15-day slowdown period, the speed restriction will be extended for an additional 15 days from the date of the new detection. This would continue until no NARW are detected.

When a NAVWARN is issued implementing a speed restriction in one or more dynamic shipping zone(s), vessels above **13 m** in length (LOA) must not exceed a speed of 10.0 knots over the ground. Within any dynamic zone that is not subject to a speed restriction, mariners may proceed at a safe operational speed. Mariners are encouraged to take into consideration the potential for their vessel striking North Atlantic right whales when considering a “safe operational speed” during navigation.

SEASONAL MANAGEMENT AREAS

Seasonal management area 1 (SMA-1) and seasonal management area 2 (SMA-2) are speed restriction areas located north and south of dynamic shipping zone E, respectively.

Within seasonal management areas, vessels above **13 m** in length (LOA):

- must restrict their speed so as not to exceed 10.0 knots over the ground from April 16th to June 24th, 2025; **and**
- are allowed to proceed at a safe operational speed from June 25th to November 15th, 2025, unless a North Atlantic right whale is detected. If a whale is detected, a speed restriction of 10.0 knots over the ground will be triggered for 15 days from the date of detection. In the event of a new North Atlantic right whale detection occurring in the last 7 days of the 15-day slowdown period, the speed restriction will be extended for an additional 15 days from the date of the new detection. This would continue until no North Atlantic right whales are detected.

Coordinates for the SMA-1:

- 49° 04' N 062° 00' W
- 49° 04' N 061° 00' W
- 48° 10.5' N 061° 00' W
- 48° 35' N 062° 00' W

Coordinates for the SMA-2:

- 48° 24' N 062° 00' W
- 48° 03' N 061° 07.5' W
- 47° 58.1' N 061° 03.5' W
- 47° 26.69' N 062° 00' W

RESTRICTED AREA

In the summer months, an important proportion of the total North Atlantic right whale population gathers for feeding and surface activity near the [Shediac Valley](#). Since this makes the North Atlantic right whale more susceptible to vessel collisions, a mandatory restricted area will be implemented in and near the Shediac Valley and will come into force once 80% of the restricted area is closed to fishing for the season as per the [Department of Fisheries and Oceans' right whale closure protocol](#) or at the latest on June 16th, 2025. The restricted area will be lifted on September 26, 2025, unless North Atlantic right whale detections are reported in high number, which would extend the restricted area beyond September 26.

The size and location of the area are determined based on historical detection data of North Atlantic right whales. All necessary details can be found in the *Interim Order No.3 for the Protection of North Atlantic Right Whales (Eubalaena Glacialis) in the Gulf of St. Lawrence, 2025*. Triggering and lifting of the restricted area will be communicated to mariners through NAVWARNs and notices to fish harvesters.

Vessels above **13 m** in length (LOA) will be required to:

- avoid the area unless they are part of the exceptions listed in the *Interim Order No.3 for the Protection of North Atlantic Right Whales (Eubalaena Glacialis) in the Gulf of St. Lawrence, 2025*;
- transit the area at a speed not exceeding 8.0 knots over the ground if they are part of the exceptions.

The following exceptions will apply to the restricted area. The following listed vessels can travel through the area at not more than 8.0 knots over the ground:

- A vessel being used for commercial fishing;
- A vessel being used for fishing under the authority of a licence issued under the *Aboriginal Communal Fishing Licences Regulations*;
- A vessel being used for research purposes on behalf of the Government of Canada
- A vessel being used as part of the Department of Fisheries and Oceans' Marine Mammal Response Program to assist a marine mammal or sea turtle in distress or to access or retrieve a deceased marine mammal or sea turtle;
- A vessel authorized by the Government of Canada to retrieve or identify the location of abandoned or lost fishing gear;
- A vessel involved in pollution response operations;
- A vessel avoiding immediate or unforeseen danger;
- A vessel involved in research relating to right whales as part of a project that has received funding from the Government of Canada.

The following vessels can travel through the restricted area at a speed over 8.0 knots, but below 10.0 knots over the ground as required by the static speed restriction zone:

- A vessel being used by an employee of the Government of Canada or peace officer who is performing their duties.

Coordinates for the restricted area:

- 48°31.8' N 063°39.6' W
- 48°24.72' N 063°17.88' W
- 47°18.84' N 064°10.8' W
- 47°27.18' N 064°30.72' W

Inclement weather exception

Mariners will be notified in advance via a NAVWARN should the speed restriction status change in any zone or area, due to inclement weather.

Within any zone or area that is no longer subject to a speed restriction due to adverse weather conditions, mariners may proceed at a safe operational speed. Mariners are however encouraged to take into consideration the potential for their vessel striking North Atlantic right whales when considering a “safe operational speed” during navigation.

*Non-excepted vessels are still prohibited from transiting through the restricted area.

VOLUNTARY SEASONAL SLOWDOWN IN CABOT STRAIT

To coincide with the North Atlantic right whales entering and exiting the Gulf of St. Lawrence in large numbers, a voluntary seasonal slowdown is being put in place in Cabot Strait from April 16th to June 24th, 2025, and from September 3rd to November 15th, 2025.

- During these periods, vessels above 13 m in length (LOA) are requested to voluntarily reduce their speed as to not exceed 10.0 knots over the ground.

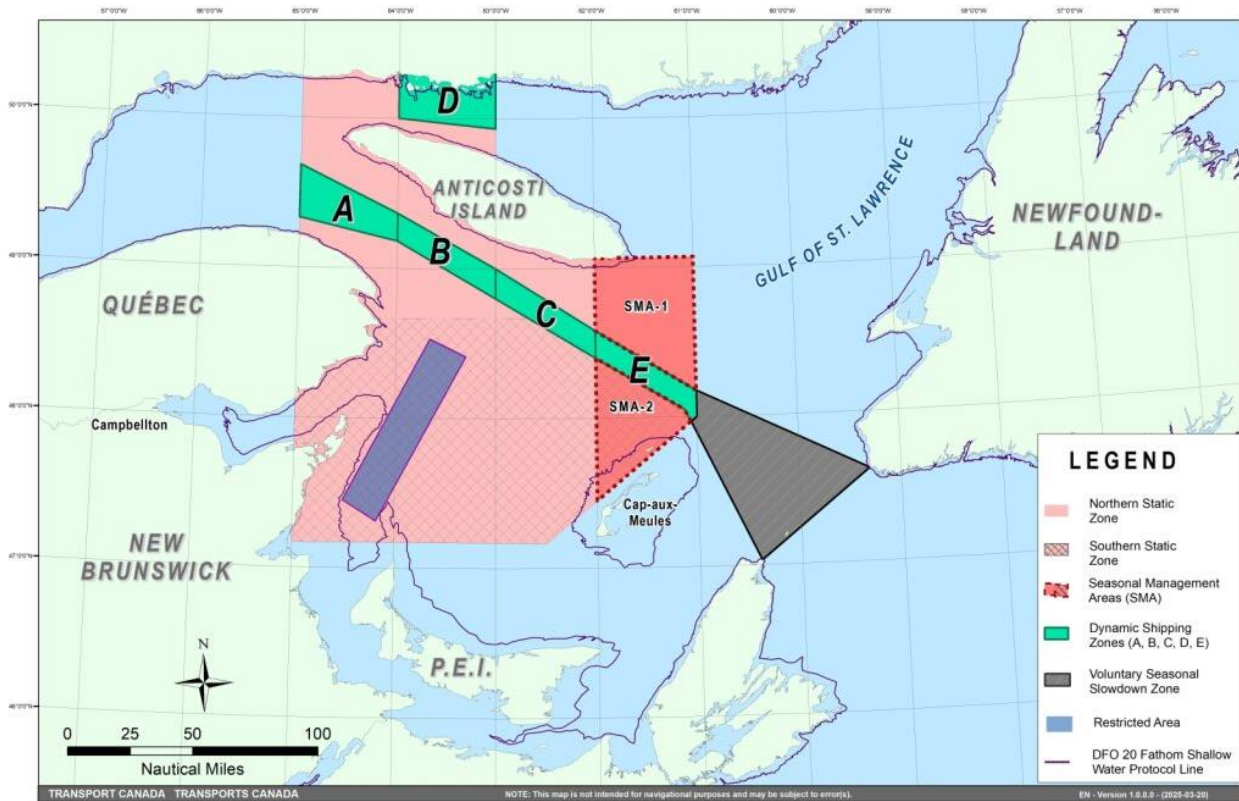
Voluntary seasonal slowdown zone coordinates:

- 48° 10.5' N 061° 00' W
- 47° 37.2' N 059° 18.5' W
- 47° 02' N 060° 23.7' W
- 47° 58.1' N 061° 03.5' W
- 48° 00' N 061° 00' W

Map of the Gulf of St. Lawrence

The following map shows

- the static zones (north and south), in pink;
- the dynamic shipping zones (A, B, C, D and E), in green;
- the seasonal management areas, in dark pink;
- the voluntary seasonal slowdown zone, in grey;
- the restricted area, in dark blue; and
- the 36.57 m (20 fathom) shallow water protocol line.



This map is for visual representation only and is not to be used for navigation or enforcement.

ROSEWAY BASIN – AREA TO BE AVOIDED

The Roseway Basin, located approximately 20 nautical miles south of Cape Sable Island, Nova Scotia, is a critical habitat for North Atlantic right whales, which have been observed to gather in the area on a seasonal basis in Canadian waters. This critical habitat is also located near key shipping routes. In 2007, Canada, with the support of many groups with varied interests, proposed to the International Maritime Organization (IMO) the establishment of a seasonal Area to be Avoided in the Roseway Basin to protect North Atlantic right whales, which IMO accepted and adopted.

To reduce the risk of vessels colliding with North Atlantic right whales, it is recommended that vessels of 300 gross tonnages and more, in transit during the period of June 1 through December 31, avoid the Roseway Basin area. Smaller vessels are also encouraged to avoid passage through this area. If passage is necessary within the Area to be Avoided, it is recommended that all mariners decrease their vessel speed to no more than 10 knots, when safe to do so.

Roseway Basin coordinates:

- 43° 16' N 064° 55' W
- 42° 47' N 064° 59' W
- 42° 39' N 065° 31' W
- 42° 52' N 066° 05' W

BAY OF FUNDY – VOLUNTARY SLOWDOWN

The Grand Manan Basin located in the Bay of Fundy is identified as a critical habitat for the North Atlantic right whale. When North Atlantic right whales are detected in the Bay of Fundy shipping lanes and near the Grand Manan Basin area, the Fundy Traffic will ask vessels to voluntarily slowdown to 10 knots via VHF channel 12 or 14 at corresponding Calling-in-Points.

NAVWARN BROADCASTS

The Canadian Coast Guard issues NAVWARNs:

- by radio broadcast; and
- online at [Canada's Maritime Information Portal](#) and its [Navigational Warnings](#) site, using the [North Atlantic Right Whale](#) category.

Mariners must ensure they have accurate and up-to-date information about the protection of the North Atlantic right whale, as in all applicable NOTMARs and NAVWARNs.

For the North Atlantic right whale speed restrictions, the NAVWARN(s) currently in effect will be provided to vessels subject to the *Vessel Traffic Services Zone Regulations* or the *Eastern Canada Vessel Traffic Services Zone Regulations*:

Outbound vessels will receive NAVWARNs

- at Calling-in-Point 10 (St-Laurent); or
- upon a departure downstream from the Quebec pilot station (including the Saguenay River, Chaleur Bay, Miramichi Bay, etc.)

Inbound vessels will receive NAVWARNs

- when a clearance to enter Canadian waters is granted

Vessels in transit will receive NAVWARNs

- at the last reporting point prior to entering the mandatory speed restriction zones; and/or
- at 10 nautical miles before they enter the mandatory speed restriction zones

For those vessels not subject to the above-mentioned regulations, vessel operators are required to monitor broadcasts by the Canadian Coast Guard's Marine Communications and Traffic Services network for the most up to date information. For marine radio frequencies and broadcast times, information may be found in the [Radio Aids to Marine Navigation](#) publication.

AIDS TO NAVIGATION

The Canadian Coast Guard broadcasts virtual Automatic Identification System (AIS) aids to navigation (AIS AtoN) in specific areas. These aids may notify mariners of dynamic shipping zones and/or seasonal management areas subject to speed restrictions.

Each zone is delimited by four to six virtual AIS AtoN, which can be displayed on a ship's navigation equipment, such as

- Electronic Chart Display and Information System (ECDIS);
- Electronic Chart System (ECS);
- RADAR;
- Minimum Keyboard Display (MKD); and
- Electronic Nautical Chart (ENC).

The Canadian Coast Guard broadcasts the virtual AIS AtoN only when a speed restriction is in effect in one or more testing zones.

Mariners must select the virtual AIS AtoN symbol to view a message such as “SectA1 Spd Lim 10 kt.” This message refers to a speed restriction in effect for a specific zone.

Note: This system is not the primary method of communicating this information.

COMPLIANCE AND ENFORCEMENT

Vessels must comply with the Interim Orders made pursuant to the *Canada Shipping Act, 2001*, and any NAVWARNs broadcasted and published by the Canadian Coast Guard relating to the Interim Orders, aimed at regulating the navigation for the purposes of protecting the North Atlantic right whales.

If a vessel does not comply with the Interim Orders or instructions in the NAVWARNs related to the Interim Orders, the vessel could face:

- administrative monetary penalties up to a maximum of CAN \$250,000; and/or
- penal sanctions under the *Canada Shipping Act, 2001* is liable on summary conviction to a fine of not more than CAN \$1,000,000 or to imprisonment for a term of not more than 18 months, or to both.

If a vessel appears to have violated the speed restriction, Transport Canada Marine Safety inspectors will review all information provided through AIS and seek an explanation from the master.

No exemptions to the speed restriction will be granted in advance. However, if a deviation from the speed restrictions is necessary for safety reasons, the following information must be entered into the bridge logbook:

- reason(s) for deviation;
- speed at which vessel is operated;
- latitude and longitude at time of deviation;
- time and duration of deviation; and
- master of the vessel shall sign and date the bridge logbook entry.

For any deviation, Transport Canada will review and consider reasons such as:

- navigating to ensure vessel safety;
- weather conditions;
- force majeure (unforeseeable circumstances); and
- responding to emergencies.

REPORT A NORTH ATLANTIC RIGHT WHALE SIGHTING

If you see **live, free-swimming whales**:

- **Email:** DFO.GLFWholes-BaleinesGLF.MPO@dfo-mpo.gc.ca
- When reporting sightings of North Atlantic right whales, you must include: GPS location (latitude and longitude), date and time of sighting, number of marine mammals, **photograph(s)/video(s) collected** and if possible, behavior of marine mammals observed (ex., feeding, travelling, diving).

SIGHTINGS OF ENTANGLED, INJURED OR DEAD NORTH ATLANTIC RIGHT WHALE

If you see a North Atlantic right whale (and all other marine mammals) **entangled, injured or dead**, please document and report it immediately to the regional Response Network.

- When documenting you should collect: GPS location (latitude and longitude), date and time of sighting, number of marine mammals, photograph(s)/video(s), and description of the incident to provide to the Response Network.

Southern part of the Gulf of St. Lawrence (New Brunswick, Nova Scotia & Prince Edward Island)

Marine Animal Response Society
Telephone: 1-866-567-6277

Newfoundland and Labrador

Whale Release and Strandings Newfoundland and Labrador (Tangly Whales Inc.)
Telephone: 1-888-895-3003 or 1-709-895-3003

Québec

Réseau québécois d'urgences pour les mammifères marins (RQUMM)
Telephone: 1-877-722-5346

Report a marine mammal or sea turtle incident or sighting:

Visit the website for more information on [reporting other marine mammal or sea turtle sighting](#) and incidents.

Please consult [Whale Insight](#) for the latest right whale observations.

***602/25 Canadian Hydrographic Service – Nautical Charts**

Charts	Main Title	Scale	Edition Date	Published	Cat#	Price
New Charts						
3011	Juan de Fuca to / à Queen Charlotte Sound	1:700 000	2025-04-25	2025-06-06	2	\$20.00
Charts Permanently Withdrawn						
3001	Vancouver Island / Île de Vancouver, Juan de Fuca Strait to/à Queen Charlotte Sound	Cancelled by 3011				

***603/25 Canadian Hydrographic Service – Electronic Navigational Charts**

S-57 ENC Number	Chart Title	ENC Compilation Scale	Published
New Charts			
CA47VNQA (Edn 1.000)	CA47VP1A_5800N069W	1:22 500	2025-06-06
CA47VP1A (Edn 1.000)	CA47VP1A_5800N068W	1:22 500	2025-06-06
CA47VPBA (Edn 1.000)	CA47VPBA_5800N067W	1:22 500	2025-06-06
CA47VPMA (Edn 1.000)	CA47VPMA_5800N066W	1:22 500	2025-06-06
CA486NEA (Edn 1.000)	CA486NEA	1:22 500	2025-06-20
CA486NQA (Edn 1.000)	CA486NQA_5900n06900w	1:45 000	2025-06-06
CA486P1A (Edn 1.000)	CA486P1A	1:45 000	2025-06-06
CA486PBA (Edn 1.000)	CA486PBA_5900N06700W	1:45 000	2025-06-06
CA486PMA (Edn 1.000)	CA486PMA_5900N06600W	1:45 000	2025-06-06
CA48GNEA (Edn 1.000)	CA48GNEA	1:22 500	2025-06-20
CA571254 (Edn 1.000)	CA571254	1:6 000	2025-06-06
CA5CVJLA (Edn 1.000)	CA5CVJLA	1:11 000	2025-06-13

S-57 ENC Number	Chart Title	ENC Compilation Scale	Published
CA5CVJMA (Edn 1.000)	CA5CVJMA	1:11 000	2025-06-13
CA5CVJNA (Edn 1.000)	CA5CVJNA	1:11 000	2025-06-13
CA5CVJPA (Edn 1.000)	CA5CVJPA	1:11 000	2025-06-13
CA5CVJQA (Edn 1.000)	CA5CVJQA	1:11 000	2025-06-13
New Editions			
CA448MHA (Edn 3.000)	Transit4600N07300W	1:11 000	2025-06-06
CA448PMA (Edn 3.000)	CA448PMA	1:22 500	2025-06-20
CA44JPMA (Edn 2.000)	CA44JPMA	1:90 000	2025-06-20
CA543R1A (Edn 2.000)	CA543R1A	1:11 000	2025-06-06
CA54DMRA (Edn 2.000)	Port4650N07220W	1:2 000	2025-06-20
CA54UPSA (Edn 2.000)	Port4800N06550W	1:2 000	2025-06-06
CA571541 (Edn 2.000)	CA571541	1:11 000	2025-06-20
Charts Permanently Withdrawn			
CA373500	Approches à/Approaches to Rivière George	Cancelled by CA473446	
CA373501	Beacon Island à/to Qikirtaaluk Islands	Cancelled by CA473446	
CA373502	Qikirtaaluk Islands à/to Point Qirniraujaq	Cancelled by CA473499,CA473499	
CA373503	Approches à/Approaches to Rivière Koksoak	Cancelled by CA473499,CA473499	
CA570239	Ganges Harbour and/et Long Harbour		
CA570319	Namu Harbour	Cancelled by CA571254	
CA570567	Approaches to/Approches à Sidney		

***604/25 Canadian Hydrographic Service – Raster Digital Charts (BSB V3)**

Charts	Main Title	Scale	Edition Date	Published
Charts Permanently Withdrawn				
RM-3001	Vancouver Island / Île de Vancouver, Juan de Fuca Strait to/à Queen Charlotte Sound			

***605/25 Transport Canada - Ship Safety Bulletins #08 and #09/2025**

New **Ship Safety Bulletins** have recently been posted on the [Transport Canada website](#).

To view or download these bulletins, please click on the links below:

[SSB#08/2025](#) – Pilot project on dry dock inspections by external survey resources for small certified domestic vessels
RDIMS# 20834286

[SSB#09/2025](#) – Protecting killer whales in the waters of southern British Columbia, 2025
RDIMS# 20875055

Sign up for [e-Bulletin](#) to receive an e-mail notice each time a new Ship Safety Bulletin is published on our website.

Contact us at marinesafety-securitemaritime@tc.gc.ca or 1-855-859-3123 (Toll Free).

Section 1A: Temporary and Preliminary Notices

Reminder – Comment Period for Active Preliminary Notices

This is a reminder that the comment period is still open for the following active Preliminary notices:

Notice #	Reference Chart #	Aids Affected (LL #)	Intent of Notice
Atlantic Coast			
415(P)/25	4374	745, 746	Notice of Proposed Changes
416(P)/25	4464	860.5	Light Buoy to be Discontinued
417(P)/25	1234	1827	Aid to Navigation to be Abandoned
Inland Waters			
424(P)/25	5510	6447.24	Racon to be Discontinued
517(P)/25	1430	1194, 1195	Range Lights to be Abandoned
Other Preliminary Notices			
519(P)/25	3625	N/A	Paper Chart to be Discontinued

Please refer to the [Notices to Mariners - Monthly Summary of Temporary and Preliminary Notices](#) publication for details.

Newfoundland and Labrador Coast

Temporary Notices

No notices applicable for this edition.

Preliminary Notices

Atlantic Region

Comment Submission

Comments on proposed changes in preliminary (P) notices are solicited from mariners and other interested parties within three months of the initial publication date. Following this date, the notices will be cancelled. Any objections raised must state the facts on which they are based and should include supporting information on safety, commerce and public benefit.

Comments should be directed to the following:

Superintendent,
Aids to Navigation & Waterways
Canadian Coast Guard, Atlantic Region
P.O. Box 1000
50 Discovery Drive
Dartmouth, NS B2Y 3Z8
Telephone: (506) 636-4708
Email: DFO.CCGATLAidstoNavDiscont-AidesalanavSupprATLGCC.MPO@dfo-mpo.gc.ca

***606(P)/25 Hawkes Bay, Port Saunders, Back Arm – Aid to Navigation to be Discontinued**

Reference chart: 4679

The Canadian Coast Guard proposes to permanently discontinue the following aid to navigation:

Aid Name	LL #	Position
Back Arm North Wharf Light	211.81	50° 42' 27.7"N 057° 20' 55.2"W

Initial publication date: Friday, June 27, 2025

[Comment submission deadline](#): Thursday, September 25, 2025

(N2024-258)

Atlantic Coast

Temporary Notices

***607/25 Plans, Baie des Chaleurs/Chaleur Bay (côte nord/North Shore) – Aquaculture Sites Charted**

Reference: Notice 318(T)/23 is cancelled (Chart 4921).

The aquaculture sites have been charted on chart 4921.

Preliminary Notices

No notices applicable for this edition.

Inland Waters

Temporary Notices

***608(T)/25 Cobourg to/à Oshawa – Waterway Information: Shoal**

Reference chart: 2058

Increased silting reported in the area. Mariners are to call the Harbour Masters Office at 1 (905) 525-3412 to obtain up-to-date soundings of navigational channel.

(NW-C-3326-24)

***609(T)/25 Toronto Harbour – Marine Works: Underwater Construction**

Reference chart: 2085

Underwater construction operations taking place in the vicinity of Ashbridge Bay. Barges on site.

(NW-C-1628-25)

***610(T)/25 Georgian Bay / Baie Georgienne – Aids to Navigation Temporarily Established**

Reference: Notice 1024(T)/24 is cancelled.

Reference chart: 2201, 2261, 2291

Sixteen surface moorings and seventeen subsurface moorings temporarily established along the shoreline near Bruce Power at the following coordinates:

Surface Moorings		Subsurface Moorings	
(1)	44° 26.074'N 081° 30.777'W	(1)	44° 25.853'N 081° 31.208'W
(7)	44° 22.902'N 081° 34.027'W	(8)	44° 22.071'N 081° 34.958'W
(9)	44° 22.834'N 081° 32.405'W	(9)	44° 22.827'N 081° 32.396'W
(12)	44° 21.697'N 081° 34.525'W	(12)	44° 21.706'N 081° 34.456'W
(29)	44° 15.766'N 081° 37.561'W	(29)	44° 15.895'N 081° 37.454'W
(30)	44° 15.833'N 081° 36.704'W	(30)	44° 15.800'N 081° 36.698'W
(39)	44° 25.621'N 081° 30.117'W	(39)	44° 25.572'N 081° 30.102'W
(41)	44° 15.259'N 081° 37.026'W	(40)	44° 21.367'N 081° 34.154'W
(43)	44° 19.782'N 081° 36.669'W	(41)	44° 15.853'N 081° 37.019'W
(45)	44° 25.219'N 081° 29.427'W	(45)	44° 25.255'N 081° 29.432'W
(B)	44° 13.928'N 081° 37.388'W	(46)	44° 20.833'N 081° 33.944'W
(E)	44° 33.390'N 081° 19.969'W	(47)	44° 20.568'N 081° 34.039'W
(Spotter 1)	44° 17.618'N 081° 37.196'W	(ol1)	44° 45.389'N 081° 18.517'W
(Spotter 2)	44° 13.977'N 081° 38.237'W	(ol2)	44° 45.389'N 081° 18.510'W
(Spotter 3)	44° 26.459'N 081° 30.404'W	(ol3)	44° 45.321'N 081° 18.556'W
(Spotter 4)	44° 23.618'N 081° 32.166'W	(lyal1)	44° 57.377'N 081° 23.298'W
		(lyal2)	44° 56.731'N 081° 23.670'W

(NW-C-1671-25)

***611/25 Lake Rosseau and/et Lake Joseph – Unlit Buoy Permanently Established**

Reference: Notice 1206(T)/17 is cancelled (Chart 6022).

The following unlit buoy is permanently established at the following coordinates:

Aid Name	LL #	Position
Buoy P3/1	9089.1	45° 08' 09.0"N 079° 40' 36.0"W

(D2025-020)

Preliminary Notices

No notices applicable for this edition.

Section 2: Chart Corrections

1313 - Batiscan au/to Lac Saint-Pierre - New Edition - 08-MAR-2019 - NAD 1983

13-JUN-2025

LN/D. 06-JUN-2025

Amend	F G 14m17M to read F G 14m12M against front range/leading light (See Chart 1, P14, P16)	46°30'33.6"N 072°14'22.9"W <i>DFO(6411292-06)</i>
Amend	F G 25m17M to read F G 25m12M against rear range/leading light (See Chart 1, P14, P16)	46°30'26.5"N 072°14'40.8"W <i>DFO(6411292-07)</i>
Replace	red starboard hand pillar buoy, marked D88 with a red starboard hand spar buoy, marked D88 (See Chart 1, Q24, Q23)	46°27'17.3"N 072°15'31.1"W <i>DFO(6411292-08)</i>
Replace	red starboard hand pillar buoy, marked D82 with a red starboard hand spar buoy, marked D82 (See Chart 1, Q24, Q23)	46°28'21.3"N 072°14'42.0"W <i>DFO(6411292-09)</i>
Replace	green port hand pillar buoy, marked D71 with a green port hand spar buoy, marked D71 (See Chart 1, Q24, Q23)	46°30'00.3"N 072°13'44.0"W <i>DFO(6411292-10)</i>
Add	depth of 6,4 metres (See Chart 1, I10)	46°30'29.5"N 072°13'21.0"W <i>DFO(6411292-11)</i>
Add	depth of 1,5 metres (See Chart 1, I10)	46°27'27.6"N 072°14'32.1"W <i>DFO(6411292-12)</i>
Add	depth of 0,9 metres (See Chart 1, I10)	46°27'05.3"N 072°14'45.5"W <i>DFO(6411292-13)</i>

1313 - Port de Bécancour - New Edition - 08-MAR-2019 - NAD 1983

06-JUN-2025

LN/D. 09-MAY-2025

Affix	patch Download Patch - https://www.notmar.gc.ca/chsftp/patches/1313_6411276_1_202505061248.pdf	46°24'13.1"N 072°22'26.0"W <i>DFO(6411276-01)</i>
-------	---	--

1315 - Québec à/to Donnacona - New Edition - 24-MAY-2019 - NAD 1983

13-JUN-2025

LN/D. 14-FEB-2025

Replace	green port hand pillar buoy, marked Q51 with a green port hand spar buoy, marked Q51 (See Chart 1, Q24, Q23)	46°38'41.2"N 071°45'03.8"W <i>DFO(6411292-01)</i>
Add	depth of 6,7 metres (See Chart 1, I10)	46°38'33.6"N 071°42'13.5"W <i>DFO(6411292-02)</i>

Add	depth of 10,7 metres (See Chart 1, I10)	46°38'15.8"N 071°42'03.0"W <i>DFO(6411292-03)</i>
-----	--	--

Add	depth of 5,2 metres (See Chart 1, I10)	46°38'32.5"N 071°43'07.7"W <i>DFO(6411292-04)</i>
-----	---	--

Add	depth of 10,7 metres (See Chart 1, I10)	46°38'13.2"N 071°44'08.6"W <i>DFO(6411292-05)</i>
-----	--	--

2050 - Oshawa Harbour - New Edition - 04-OCT-2019 - World Geodetic System 1984
06-JUN-2025

LNMD. 31-JAN-2025

Amend	red starboard hand spar buoy, marked MV6 to read red starboard hand lighted spar buoy FI R, marked MV6 (See Chart 1, Qb)	43°51'49.9"N 078°49'12.5"W <i>(B2025015) LL(501.6) DFO(6605508-01)</i>
-------	---	---

27-JUN-2025		LNMD. 06-JUN-2025
-------------	--	-------------------

Amend	green port hand spar buoy MV5 to read green port hand lighted spar buoy FI G, marked MV5 (See Chart 1, Qc)	43°51'47.8"N 078°49'16.7"W <i>(B2025021) DFO(6605521-01)</i>
-------	---	---

2123 - Pelee Passage to/à la Detroit River - New Edition - 27-JAN-2006 - NAD 1983
13-JUN-2025

LNMD. 31-JAN-2025

Reposition	light, marked FI 2.5s6m(Priv) (See Chart 1, P1)	from 41°33'28.0"N 082°48'01.0"W to 41°33'27.7"N 082°48'02.9"W <i>LL(US5365) DFO(6605514-01)</i>
------------	--	---

Reposition	light, marked FI 2.5s6m(Priv) (See Chart 1, P1)	from 41°33'41.0"N 082°48'11.0"W to 41°33'41.6"N 082°48'14.8"W <i>LL(US5370) DFO(6605514-02)</i>
------------	--	---

Reposition	light, marked FI G(Priv) (See Chart 1, P1)	from 41°34'08.0"N 082°49'00.0"W to 41°34'10.0"N 082°49'00.2"W <i>LL(US5495) DFO(6605514-03)</i>
------------	---	---

Amend	FI R 10s21m8M to read FI R 10s21m15M against light (See Chart 1, P16)	41°49'34.8"N 082°27'46.0"W <i>LL(597) DFO(6605514-04)</i>
-------	--	--

4001 - Gulf of Maine to Strait of Belle Isle / au Detroit de Belle Isle - New Edition - 01-DEC-1995 - NAD 1983
27-JUN-2025

LNMD. 31-MAY-2024

Add	suspended well, with depth over wellhead of 2,983 metres with legend (Aband) (See Chart 1, L21.2)	49°43'03.6"N 046°38'16.1"W <i>DFO(6311976-01)</i>
-----	---	--

4010 - Bay of Fundy / Baie de Fundy: Inner portion / partie intérieure - New Edition - 14-FEB-2003 - NAD 1983
20-JUN-2025

LNMD. 29-NOV-2024

Add	obstruction, depth unknown, PA with legend Rep (2023) (See Chart 1, K40, B7, I3.2)	45°17'25.7"N 065°35'35.6"W <i>DFO(6311977-01)</i>
-----	---	--

4115 - Beaver Harbour - New Edition - 24-FEB-2012 - World Geodetic System 1984

06-JUN-2025

LNM/D. 11-OCT-2024

Add	light FI Y (See Chart 1, P1)	45°04'08.7"N 066°44'18.1"W (F2025002) LL(84.1) DFO(6311942-01)
Add	pier (See Chart 1, F14)	joining 45°04'08.7"N 066°44'18.1"W 45°04'08.1"N 066°44'17.0"W and 45°04'05.0"N 066°44'19.5"W DFO(6311942-02)
Delete	legend Constr (2010) against pier (See Chart 1, F32)	45°04'11.9"N 066°44'16.4"W DFO(6311942-03)
Amend	pier under construction to pier (See Chart 1, F32, F14)	joining 45°04'05.9"N 066°44'23.0"W 45°04'09.1"N 066°44'20.6"W 45°04'08.9"N 066°44'20.0"W and 45°04'06.0"N 066°44'22.2"W DFO(6311942-04)
Add	pier (See Chart 1, F14)	between 45°04'06.2"N 066°44'20.6"W and 45°04'05.7"N 066°44'18.9"W DFO(6311942-05)

4115 - Passamaquoddy Bay and / et St. Croix River - New Edition - 24-FEB-2012 - World Geodetic System 1984

06-JUN-2025

LNM/D. 11-OCT-2024

Add	pier (See Chart 1, F14)	joining 45°04'08.7"N 066°44'18.1"W 45°04'08.1"N 066°44'17.0"W and 45°04'05.1"N 066°44'19.4"W DFO(6311942-02)
-----	----------------------------	---

4117 - Saint John Harbour and Approaches / et les approches - New Edition - 29-MAY-2009 - NAD 1983

06-JUN-2025

LNM/D. 25-APR-2025

Add	light LFI G (See Chart 1, P1)	45°15'33.0"N 066°03'38.5"W (F2025005) LL(113.1) DFO(6311952-01)
Add	designation of berth 3 (See Chart 1, F19.1)	45°16'04.4"N 066°02'41.2"W DFO(6311963-01)
Add	designation of berth 4 (See Chart 1, F19.1)	45°15'53.1"N 066°03'35.0"W DFO(6311963-02)
Replace	Pugsley Terminal designation of berth C with 5 (See Chart 1, F19.1)	45°15'59.3"N 066°03'41.5"W DFO(6311963-03)
Replace	Pugsley Terminal designation of berth A and B with 6 (See Chart 1, F19.1)	45°16'06.7"N 066°03'45.5"W DFO(6311963-04)
Replace	Long Wharf designation of berth B with 7 (See Chart 1, F19.1)	45°16'20.4"N 066°04'07.5"W DFO(6311963-05)

Delete	Long Wharf designation of berth A (See Chart 1, F19.1)	45°16'26.0"N 066°04'07.4"W <i>DFO(6311963-06)</i>
Delete	Long Wharf designation of berth C (See Chart 1, F19.1)	45°16'17.3"N 066°04'13.9"W <i>DFO(6311963-07)</i>
Delete	legend Rodney North against wharf (See Chart 1, F13)	45°15'59.7"N 066°04'10.5"W <i>DFO(6311963-08)</i>
Add	designation of berth 8 (See Chart 1, F19.1)	45°16'01.0"N 066°04'07.6"W <i>DFO(6311963-09)</i>
Delete	Rodney Terminal designation of berth B (See Chart 1, F19.1)	45°15'54.9"N 066°03'59.2"W <i>DFO(6311963-10)</i>
Delete	Rodney Terminal designation of berth C (See Chart 1, F19.1)	45°15'48.7"N 066°03'52.7"W <i>DFO(6311963-11)</i>
Add	designation of berth 9 (See Chart 1, F19.1)	45°15'51.7"N 066°03'55.9"W <i>DFO(6311963-12)</i>
Delete	legend Rodney South against wharf (See Chart 1, F13)	45°15'41.0"N 066°03'52.4"W <i>DFO(6311963-13)</i>

4243 - Tusket Islands to / à Cape St Marys - New Edition - 11-OCT-2002 - NAD 1983
13-JUN-2025

LNM/D. 17-MAY-2024

Affix	patch Download Patch - https://www.notmar.gc.ca/chsftp/patches/4243_6311574_1_202503041044.pdf	43°49'00.0"N 066°09'00.0"W <i>DFO(6311574-01)</i>
-------	---	--

4245 - Yarmouth Harbour and Approaches / et les approches - New Edition - 19-NOV-1999 - NAD 1983
13-JUN-2025

LNM/D. 24-DEC-2021

Affix	patch Download Patch - https://www.notmar.gc.ca/chsftp/patches/4245_6311574_1_202503041045.pdf	43°49'00.0"N 066°09'00.0"W <i>DFO(6311574-01)</i>
Affix	patch Download Patch - https://www.notmar.gc.ca/chsftp/patches/4245_6311574_2_202502260953.pdf	43°49'00.0"N 066°08'00.0"W <i>DFO(6311574-02)</i>
Affix	patch Download Patch - https://www.notmar.gc.ca/chsftp/patches/4245_6311574_3_202502260956.pdf	43°48'30.0"N 066°09'00.0"W <i>DFO(6311574-03)</i>
Affix	patch Download Patch - https://www.notmar.gc.ca/chsftp/patches/4245_6311574_4_202502260957.pdf	43°48'30.0"N 066°08'00.0"W <i>DFO(6311574-04)</i>

4278 - Iona and / et Grand Narrows - New Edition - 26-AUG-2016 - NAD 1983

06-JUN-2025

LNm/D. 09-MAY-2025

Add wreck WK with known depth of 8.9 metres
(See Chart 1, K26)

45°57'32.2"N 060°47'50.2"W

DFO(6311958-01)

4337 - Alma (and Approaches / et les Approaches) - New Edition - 07-JUN-2002 - NAD 1983

20-JUN-2025

LNm/D. 12-JUN-2020

Delete ALMA 'Inset'

45°36'00.3"N 064°56'45.5"W

DFO(6311972-01)

Delete Note 'Inset / Cartouche' and limits of inset
(See Chart 1, A19)

45°35'58.2"N 064°57'09.0"W

DFO(6311972-02)

Add vertical clearance of 5.5 feet
(See Chart 1, D22)

45°35'57.6"N 064°56'53.0"W

DFO(6311972-03)

4381 - Chester Harbour - New Edition - 28-APR-2023 - World Geodetic System 1984

06-JUN-2025

LNm/D. 23-AUG-2024

Add dangerous wreck, masts visible, with legend PA Rep (2024)
(See Chart 1, K25, B7, I3.2)

44°31'57.5"N 064°12'59.9"W

DFO(6311959-01)

Add wreck, least depth unknown, dangerous to surface navigation, with
legend PA Rep (2024)
(See Chart 1, K28, B7, I3.2)

44°32'06.5"N 064°12'41.6"W

DFO(6311959-02)

4653 - Bay of Islands - New Edition - 30-MAY-2003 - NAD 1983

20-JUN-2025

LNm/D. 31-MAR-2023

Delete depth of 2 fathoms, 2 feet
(See Chart 1, I10)

49°05'05.0"N 058°25'46.0"W

DFO(6311961-01)

Add rock which covers and uncovers with legend Rep (2025)
(See Chart 1, K11, I3.2)

49°05'06.6"N 058°25'44.9"W

DFO(6311961-02)

4730 - Nain to / à Domino Point - New Edition - 31-MAY-2002 - Unknown

20-JUN-2025

LNm/D. 19-APR-2024

Amend Fl 4s 127ft to read Fl 4s115ft against light
(See Chart 1, P16)

55°33'13.8"N 060°14'45.0"W

(N2025021) LL(322) DFO(6311947-01)

4826 - Burgeo to / à François - New Chart - 24-FEB-2006 - NAD 1983

27-JUN-2025

LNm/D. 14-MAR-2025

Add marine farm
(See Chart 1, K48.2)

47°33'32.4"N 056°48'54.0"W

DFO(6311974-03)

4827 - Hare Bay to / à Fortune Head - New Chart - 13-AUG-2004 - NAD 1983
27-JUN-2025

LNMD. 11-AUG-2023

Add marine farm
(See Chart 1, K48.2) 47°38'28.7"N 056°19'04.1"W
DFO(6311974-01)

Add marine farm
(See Chart 1, K48.2) 47°38'39.5"N 056°31'08.0"W
DFO(6311974-02)

4839 - Head of / Fond de Placentia Bay - New Edition - 28-JAN-2011 - NAD 1983
20-JUN-2025

LNMD. 17-NOV-2023

Add obstruction, depth unknown, with legend PA Rep (2024)
(See Chart 1, K40, B7, I3.2) 47°48'02.4"N 054°06'55.2"W
DFO(6311960-01)

4864 - Black Island to / à Little Denier Island - New Chart - 25-AUG-2006 - NAD 1983
27-JUN-2025

LNMD. 15-SEP-2023

Add marine farm limits
(See Chart 1, K48.1) joining 49°22'18.5"N 055°18'29.3"W
49°22'18.5"N 055°18'18.4"W
49°22'28.7"N 055°18'23.2"W
49°22'28.7"N 055°18'35.7"W
and 49°22'18.5"N 055°18'29.3"W
DFO(6311975-01)

4913 - Caraquet Harbour, Baie de Shippegan and / et Miscou Harbour - New Chart - 07-AUG-1992 - NAD 1983
20-JUN-2025

LNMD. 02-MAY-2025

Add depth of 5 metres
(See Chart 1, I10) 47°47'52.6"N 064°55'25.3"W
DFO(6311964-01)

Delete depth of 7.5 metres
(See Chart 1, I10) 47°48'02.5"N 064°55'09.6"W
DFO(6311964-02)

Add depth of 7.2 metres
(See Chart 1, I10) 47°48'03.6"N 064°55'04.4"W
DFO(6311964-03)

Delete depth of 2.4 metres
(See Chart 1, I10) 47°49'11.5"N 064°54'38.2"W
DFO(6311964-04)

Add depth of 2 metres
(See Chart 1, I10) 47°49'11.6"N 064°54'35.8"W
DFO(6311964-05)

Add depth of 1.7 metres
(See Chart 1, I10) 47°48'38.7"N 064°54'06.2"W
DFO(6311964-06)

Add depth of 9.7 metres
(See Chart 1, I10) 47°50'01.5"N 064°47'57.3"W
DFO(6311964-07)

Add depth of 5.4 metres
(See Chart 1, I10) 47°50'15.9"N 064°47'38.6"W
DFO(6311964-09)

4920 - Caraquet - New Edition - 14-DEC-2018 - NAD 1983

20-JUN-2025

LNMD. 14-MAR-2025

Add depth of 5 metres
(See Chart 1, I10)

47°47'52.4"N 064°55'27.0"W

DFO(6311964-01)

4920 - Middle Caraquet - New Edition - 14-DEC-2018 - NAD 1983

20-JUN-2025

LNMD. 14-MAR-2025

Add depth of 5 metres
(See Chart 1, I10)

47°48'27.7"N 064°52'08.7"W

DFO(6311964-08)

7010 - Davis Strait and/et Baffin Bay - New Edition - 12-JAN-1979 - Unknown

06-JUN-2025

LNMD. 02-MAY-2025

Add depth of 7 fathoms, Rep (2025)
(See Chart 1, I10)

67°58'48.0"N 053°57'30.0"W

(BRITAD:1783/2025) DFO(6605513-01)

7193 - Cape Hooper and Approaches/et les Approches - New Edition - 25-MAR-2016 - NAD 1983

27-JUN-2025

Delete depth of 5 fathoms 5 feet
(See Chart 1, I10)

68°29'59.7"N 066°32'36.4"W

DFO(6605501-17)

Add depth of 8 fathoms
(See Chart 1, I10)
This notice affects Electronic Navigational Chart: CA373545

68°29'54.2"N 066°32'36.9"W

DFO(6605501-18)

7194 - Cape Hooper to/à Arguyartu Point Including/y compris Ekalugad Fiord - New Edition - 25-MAR-2016 - NAD 1983

27-JUN-2025

Delete beacon with radar reflector, marked Bn PA
(See Chart 1, Q10, B7)

68°37'38.5"N 067°43'43.1"W

DFO(6605501-01)

Delete beacon with radar reflector, marked Bn PA
(See Chart 1, Q10, B7)

68°39'11.0"N 067°34'03.6"W

DFO(6605501-02)

Delete depth of 17 fathoms
(See Chart 1, I10)

68°36'04.0"N 067°34'39.6"W

DFO(6605501-03)

Add depth of 63 fathoms
(See Chart 1, I10)

68°36'04.0"N 067°34'39.6"W

DFO(6605501-04)

Delete depth of 3 fathoms 1 foot
(See Chart 1, I10)

68°36'06.7"N 067°35'00.0"W

DFO(6605501-05)

Add depth of 70 fathoms
(See Chart 1, I10)

68°36'06.7"N 067°35'00.0"W

DFO(6605501-06)

Delete	depth of 2 fathoms 5 feet (See Chart 1, I10)	68°36'07.9"N 067°35'27.4"W <i>DFO(6605501-07)</i>
Add	depth of 84 fathoms (See Chart 1, I10)	68°36'07.9"N 067°35'27.4"W <i>DFO(6605501-08)</i>
Delete	depth of 5 fathoms 5 feet (See Chart 1, I10)	68°36'24.0"N 067°35'14.1"W <i>DFO(6605501-09)</i>
Add	depth of 46 fathoms (See Chart 1, I10)	68°36'24.0"N 067°35'14.1"W <i>DFO(6605501-10)</i>
Delete	depth of 1 fathom 5 feet (See Chart 1, I10)	68°36'19.7"N 067°36'30.3"W <i>DFO(6605501-11)</i>
Add	depth of 90 fathoms (See Chart 1, I10)	68°36'19.7"N 067°36'30.3"W <i>DFO(6605501-12)</i>
Delete	depth of 4 fathoms 5 feet (See Chart 1, I10)	68°36'33.0"N 067°36'46.0"W <i>DFO(6605501-13)</i>
Add	depth of 24 fathoms (See Chart 1, I10)	68°36'33.0"N 067°36'46.0"W <i>DFO(6605501-14)</i>
Delete	depth of 5 fathoms marked, PA (See Chart 1, I10)	68°37'12.0"N 067°29'36.0"W <i>DFO(6605501-15)</i>
Add	depth of 70 fathoms (See Chart 1, I10)	68°37'12.0"N 067°29'36.0"W <i>DFO(6605501-16)</i>
Delete	depth of 5 fathoms 5 feet (See Chart 1, I10)	68°27'57.3"N 066°33'33.7"W <i>DFO(6605501-17)</i>
Add	depth of 8 fathoms (See Chart 1, I10) This notice affects Electronic Navigational Chart: CA373545	68°27'55.4"N 066°33'33.9"W <i>DFO(6605501-18)</i>

8047 - Cod Island to / à Cape Harrison - New Edition - 23-MAY-2003 - Unknown
20-JUN-2025

LN/D. 09-DEC-2022

Amend	Fl4s39m to read Fl 4s35m against light (See Chart 1, P16)	55°33'03.7"N 060°14'56.8"W <i>(N2025021) LL(322) DFO(6311947-01)</i>
-------	--	---

Section 3: Radio Aids to Marine Navigation Corrections

***612/25 Radio Aids to Marine Navigation 2025 (Atlantic, St. Lawrence, Great Lakes, Lake Winnipeg, Arctic and Pacific)**

Page 2-60

AMEND AS FOLLOWS:

2.2 Canal and Lock Operations

Table 2-27 - Atlantic Coast, Gulf and St. Lawrence River to Montréal, Eastern Arctic

Name Coordinates Call Sign	Class of Service	Channel	Remarks
Canso Lock, N.S. 45°38'04"N 061°24'30"W 45°38'55"N 061°24'52"W VAZ3	SC	16 11	Operated by Fisheries and Oceans Canada. Canal traffic only. Continuous during navigation season.

Section 4: Canadian Sailing Directions Corrections

The following **Canadian Sailing Directions** volumes have recently been updated on the [Canadian Hydrographic Service website](#).

No.	Title
Atlantic Coast	
ATL 105	Cape Canso to Cape Sable (including Sable Island)
ATL 110	St. Lawrence River, Cap Whittle / Cap Gaspé to Les Escoumins and Anticosti Island
ATL 112	St. Lawrence River, Cap-Rouge to Montréal and Rivière Richelieu
Central Canada	
CEN 303	Welland Canal and Lake Erie
CEN 305	Lake Huron, St. Marys River, Lake Superior
Pacific Coast	
PAC 203	Cape Caution to Stewart and Haida Gwaii

Each volume includes a section entitled “Record of Changes” which lists all updates that are incorporated during the current calendar year.

Section 5: List of Lights, Buoys and Fog Signals Corrections

The amendments are **highlighted** and deletions are **crossed out**. For general and region-specific information on the List of Lights, click on the following links: [Newfoundland and Labrador Coast](#), [Atlantic Coast](#), [Inland Waters](#) and [Pacific Coast](#).

No.	Name	Position ----- Latitude N. Longitude W.	Light Characteristics	Focal Height in m. above water	Nomi- nal Range	Description ----- Height in meters above ground	Remarks ----- Fog Signals
-----	------	--	--------------------------	--	-----------------------	--	---------------------------------

NEWFOUNDLAND AND LABRADOR COAST

NOTRE DAME BAY (LL 326 – 395)

327.6	Smiths Harbour Rock light buoy DSM4	49 44 03.1 055 57 40.2	Fl R 4s	Red spar, marked "DSM4".	Seasonal.
							Chart:4585 Edn 06/25 (N25-022)

ATLANTIC COAST

BAY OF FUNDY, N.B. – WEST (LL 5.8 – 114)

84 H4113	Beaver Harbour	On outer end of breakwater. 45 04 07.9 066 44 14.5	Fl G 5s	4.7	5	Cylindrical mast, green, white and black square daymark. 3.8	Flash 1 s; eclipse 4 s. Operates at night only. Year round.
							Chart:4116 Edn 06/25 (F25-008)

NORTHUMBERLAND STRAIT – WEST (LL 1085 – 1165.9)

1111.01	Pointe-du-Chêne North Breakwater Light	46 14 31.6 064 31 43.1	Fl G 5s	7	Square skeleton tower, green and white rectangular daymark.	Flash 1 s; eclipse 4 s. Seasonal.
							Chart:4909 Edn 06/25 (G25-088)
1113.04	Cocagne Harbour light buoy XT4	46 22 28.4 064 34 00.9	Fl R 4s	Red, marked "XT4".	Buoy may be repositioned due to shifting channel. Seasonal.
							Chart:4909 Edn 06/25
1127.3	Chockpish light buoy XR1	46 34 56.8 064 43 01.5	Fl G 4s	Green spar, marked "XR1".	Seasonal.
							Chart:4905 Edn 06/25 (G25-086)
1127.4	Chockpish light buoy XR2	46 34 58.1 064 43 01.4	Fl R 4s	Red spar, marked "XR2".	Seasonal.
							Chart:4905 Edn 06/25 (G25-087)
1129.1	Cap-Lumière light buoy QX1	46 40 21.6 064 42 36.1	Fl G 4s	Green, marked "QX1".	Seasonal.
							Chart:N/A Edn 06/25 (G25-072)

GASPÉ – CHALEUR BAY (LL 1169.1 – 1426)

1248	Shippegan Fairway light buoy TJ	S. entrance to Shippegan Gully. 47 42 30.2 064 39 53.9	Mo(A) W 6s	Red and white vertical stripes spar, marked "TJ".	Buoy may be repositioned due to shifting channel. Seasonal.
							Chart:4920 Edn 06/25 (G25-065)

Notices to Mariners – Monthly Eastern Edition
Section 5: List of Lights, Buoys and Fog Signals Corrections

No.	Name	Position ----- Latitude N. Longitude W.	Light Characteristics	Focal Height in m. above water	Nomi- nal Range	Description ----- Height in meters above ground	Remarks ----- Fog Signals
1248.101	Shippegan Gully light buoy TJ3	47 42 36.7 064 40 02.6	Fl G 4s	Green, marked "TJ3".	Seasonal. Chart:4920 Edn 06/25 (G25-066)
1248.11	Shippegan Gully light buoy TJ4	47 42 38.1 064 40 01.2	Q R 1s	Red spar, marked "TJ4".	Operates 24 h. Seasonal. Chart:N/A Edn 06/25 (G25-069)
1248.12	Shippegan Gully light buoy TJ5	47 42 40.1 064 40 03.1	Q G 1s	Green spar, marked "TJ5".	Buoy may be repositioned due to shifting channel. Seasonal. Chart:4920 Edn 06/25 (G25-070)
1248.13	Shippegan Gully light buoy TJ6	47 42 40.9 064 39 56.2	Q R 1s	Red spar, marked "TJ6".	Buoy may be repositioned due to shifting channel. Seasonal. Chart:4920 Edn 06/25 (G25-071)
1248.132	Shippegan Gully light buoy TJ6/2	47 42 42.2 064 39 48.6	Q R 1s	Red, marked "TJ6/2".	Seasonal. Chart:4920 Edn 06/25 (G25-067)
1248.133	Shippegan Gully light buoy TJ7	47 42 46.0 064 39 52.6	Q G 1s	Green spar, marked "TJ7".	Buoy may be repositioned due to shifting channel. Operates 24 h. Seasonal. Chart:N/A Edn 06/25 (G25-073)
1248.151	Shippegan Gully light buoy TJ8	47 42 46.2 064 39 45.5	Q R 1s	Red spar, marked "TJ8".	Seasonal. Chart:4920 Edn 06/25 (G25-074)
1248.51	Shippegan Gully light buoy TJ9	47 42 51.6 064 39 52.8	Fl G 4s	Green spar, marked "TJ9".	Operates 24 h. Seasonal. Chart:4920 Edn 06/25 (G25-075)
1248.511	Shippegan Gully light buoy TJ10	47 42 55.8 064 39 50.8	Q R 1s	Red, marked "TJ10".	Seasonal. Chart:4920 Edn 06/25 (G25-068)
1248.71	Shippegan Gully light buoy TJ14	47 43 07.4 064 40 00.2	Fl R 4s	Red, marked "TJ14".	Seasonal. Chart:N/A Edn 06/25 (G25-078)
1249.1	Shippegan Gully light buoy TJ12	47 43 01.8 064 39 52.0	Fl R 4s	Red, marked "TJ12".	Operates 24 h. Seasonal. Chart:4920 Edn 06/25 (G25-077)
1251.51	Shippegan Gully light buoy TJ11	47 43 00.2 064 39 56.0	Fl G 4s	Green, marked "TJ11".	Seasonal. Chart:N/A Edn 06/25 (G25-076)

Notices to Mariners – Monthly Eastern Edition
Section 5: List of Lights, Buoys and Fog Signals Corrections

No.	Name	Position ----- Latitude N. Longitude W.	Light Characteristics	Focal Height in m. above water	Nomi- nal Range	Description ----- Height in meters above ground	Remarks ----- Fog Signals
1257.3	Shippegan Gully light buoy TJ26	47 43 27.5 064 39 59.0	Fl R 4s	Red, marked "TJ26".	(Winter spar.) Seasonal. Chart:4920 Edn 06/25 (G25-079)
1258.125	Shippegan Gully light buoy TJ35	47 43 47.4 064 40 07.4	Q G 1s	Green spar, marked "TJ35".	Buoy may be repositioned due to shifting channel. Seasonal. Chart:4920 Edn 06/25 (G25-081)
1261	Shippegan Gully light buoy TJ40	47 43 54.5 064 40 11.7	Fl R 4s	Red spar, marked "TJ40".	Buoy may be repositioned due to shifting channel. Seasonal (in place year round). Chart:4920 Edn 06/25 (G25-083)
1261.55	Shippegan Gully light buoy TJ55	47 44 19.9 064 41 06.8	Fl G 4s	Green spar, marked "TJ55".	Buoy may be repositioned due to shifting channel. Seasonal (in place year round). Chart:4920 Edn 06/25 (G25-084)
1261.6	Shippegan Gully light buoy TJ60	47 44 33.2 064 41 13.6	Q R 1s	Red spar, marked "TJ60".	Buoy may be repositioned due to shifting channel. Seasonal (in place year round). Chart:4920 Edn 06/25 (G25-085)
1276.2	Shippegan North Channel light and whistle fairway buoy EG Racon - - - (G) X Band	47 53 14.2 064 45 47.6	Mo(A) W 6s	Red and white vertical stripes, marked "EG".	(Winter spar.) Buoy may be repositioned due to shifting channel. Seasonal. Chart:4913 Edn 06/25 (G25-089)
GULF OF ST. LAWRENCE (LL 1477.5 – 1617)							
1513.2 H1886	Cap-de-la-Table						Delete from list. Chart:4025 Edn 06/25 (Q25-048)
1523 H1878	Pointe Ouest	On W. extremity of L'île-d'Anticosti Island. 49 51 50.6 064 31 23.7	Fl W 5s	27.6	11	Skeleton tower. 29.4	Flash 1 s; eclipse 4 s. Omnidirectional. Year round. Chart:4430 Edn 06/25 (Q25-050)
ST. LAWRENCE ESTUARY, GULF OF ST. LAWRENCE – RIVIÈRE DU LOUP (LL 1620 – 1772)							
1748 H2084	Île Bicquette Sector						Delete from list. Chart:1223 Edn 06/25 (Q25-049)

Notices to Mariners – Monthly Eastern Edition
Section 5: List of Lights, Buoys and Fog Signals Corrections

No.	Name	Position ----- Latitude N. Longitude W.	Light Characteristics	Focal Height in m. above water	Nomi- nal Range	Description ----- Height in meters above ground	Remarks ----- Fog Signals
-----	------	--	--------------------------	--	-----------------------	--	---------------------------------

INLAND WATERS

ST. LAWRENCE SEAWAY, CANAL DE BEAUHARNOIS TO KINGSTON (LL 33 – 401)

398.1 Garden Island light 44 12 26.6 Fl R 4s Red spar, marked "KA2". Seasonal.
buoy KA2 076 27 19.4

Chart:2017
Edn 06/25 (B25-019)

LAKE ONTARIO (LL 403.4 – 551)

487 Presqu'île Bay No. 2, SE. of F G 10.6 7 White cylindrical tower with Visible over an arc of 5.5°
Sector Brighton. W R 8.4 Green from 292.3° to 294.8°;
44 01 07.2 red top. white from 294.8° to 295.3°;
077 43 16.1 red from 295.3° to 297.8°;
Seasonal.

Chart:2059
Edn 06/25 (B25-022)

LAC SAINT-LOUIS – SECONDARY CHANNELS (LL 1193 – 1226.95)

1196.2 Lachine light buoy 45 25 50.9 Fl R 4s Red spar, marked "AC22". Seasonal (in place year round).
AC22 073 42 03.8

Chart:1430
Edn 06/25 (Q25-051)

LAKE WINNIPEG (LL 1563.1 – 1625)

1588 Pine Dock On end of wharf. Fl R 4s 10.7 6 Square skeleton tower, red Operates 24 h.
51 38 24.0 and white rectangular Seasonal.
096 48 08.0 daymark.
4.8

Chart:6267
Edn 06/25 (P25-018)

1613.5 Sturgeon Skin N. of Long Point. Fl G 4s Green spar, marked "CS3". Seasonal.
Shoal light buoy 53 08 36.0
CS3 098 50 00.0

Chart:6241
Edn 06/25 (P25-017)